

PLC Controlled Extraction Scales 500/700/1500/2000 Lt.



Excellent Milling Properties...

GRK

GENERAL FEATURES:

Grain flow rate, sufficient for preventing vibration occurring during product discharging cycle, is accurately (0.3 %) measured in kg per hour by means of extraction rate scales with 3 loadcells.

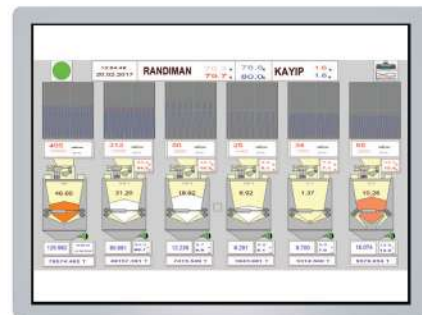
The extraction rate control unit is used for weighing products such as wheat, flour, bran etc. It provides continuous control of product yield rates.

The Extraction rate scales operation starts with the product filling the measuring-container. The product enters the container under control by means of the flap which controls access to the container. The measuring process is carried out, and the stabilization time controlled by load cells located at three points on the measuring container. When the required level is reached the upper flap is closed. On completion of the measuring process, the measured product is released to the line via the opening flaps located under the container.

Reports can be taken in hourly, 8 hourly, daily, weekly, monthly and yearly periods. In the event of a fault, remote access can be provided via the internet to intervene malfunctions.

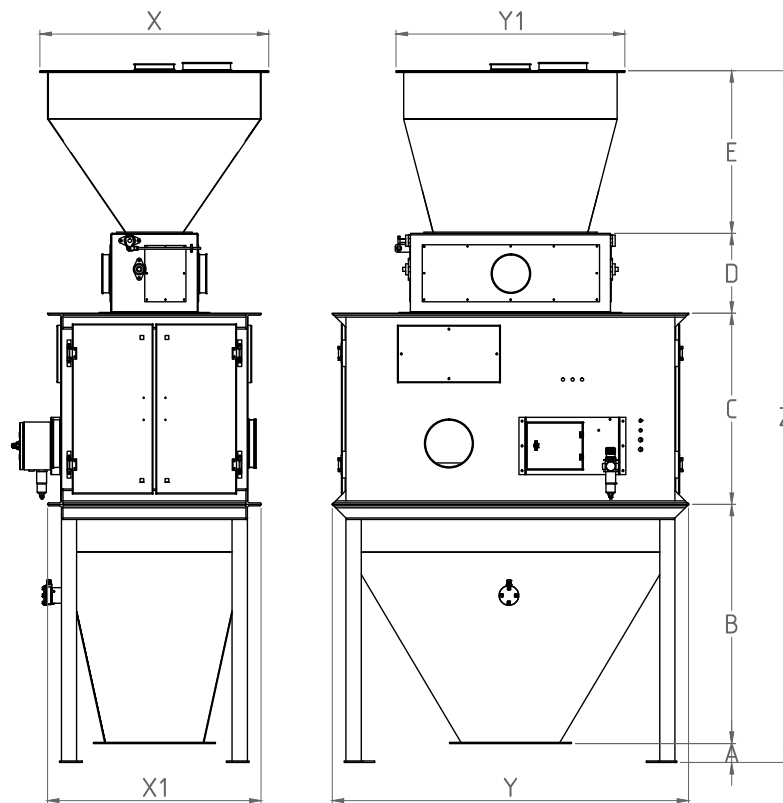


PLC Controlled Extraction Scales 500/700/1500/2000 Lt.



PLC Controlled Extraction Scales 500/700/1500/2000 Lt.

Product Data Sheet



TECHNICAL FEATURES

| Product Code | A | B | C | D | E | Y | Y1 | Z | X | X1 |
|--------------|-----|------|------|-----|------|------|------|------|------|------|
| GRK-500 | 100 | 1250 | 1000 | 420 | 850 | 1870 | 1200 | 3620 | 1200 | 1120 |
| GRK-700 | 50 | 1500 | 1000 | 420 | 1100 | 1870 | 1300 | 4070 | 1300 | 1280 |
| GRK-1500 | 160 | 1650 | 1470 | 420 | 1500 | 1870 | 1600 | 5200 | 1565 | 1525 |
| GRK-2000 | 155 | 1650 | 1460 | 420 | 1506 | 2300 | 1600 | 5191 | 1600 | 1600 |

CAPACITY

| Product Code | Product | Liter (Lt) | Wheat (Ton/Hour) | Aspiration (m ³) | Air Supply (Bar) | Weight (Kg) |
|--------------|---------|------------|------------------|------------------------------|------------------|-------------|
| GRK-500 | Wheat | 500 | 50 - 100 | 16 | 5 - 6 | 1220 |
| GRK-700 | Wheat | 700 | 100 - 150 | 20 | 5 - 6 | 1420 |
| GRK-1500 | Wheat | 1500 | 150 - 300 | 28 | 5 - 6 | 2265 |
| GRK-2000 | Wheat | 2000 | 350 - 500 | 36 | 8-10 | 2300 |